

# MONTHLY MEMBERSHIP PROGRESS REPORT

LOCATION KANSAS

District 17 A

Results as of: 4/30/2023

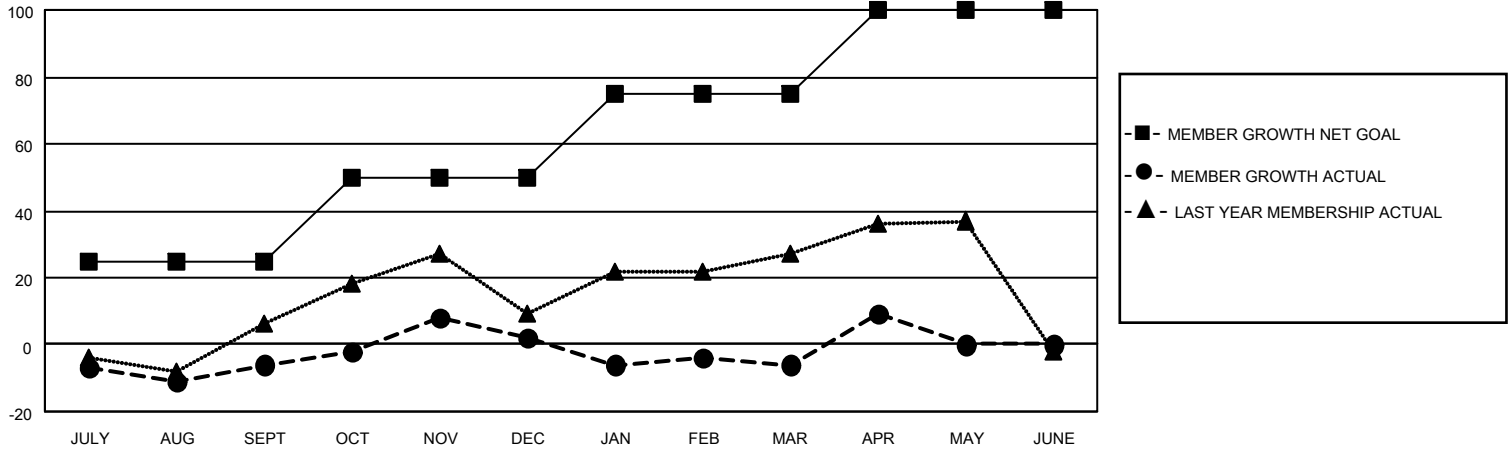
| Clubs                 |               |           |               |
|-----------------------|---------------|-----------|---------------|
| RESULTS FOR 2022-2023 |               |           |               |
| QUARTER               | NEW CLUB GOAL | NEW CLUBS | DROPPED CLUBS |
| JULY/AUG/SEPT         | 1             | 0         | 0             |
| OCT/NOV/DEC           | 0             | 0         | 0             |
| JAN/FEB/MAR           | 1             | 0         | 0             |
| APR/MAY/JUNE          | 0             | 0         | 0             |

| Members               |                        |                      |   |
|-----------------------|------------------------|----------------------|---|
| RESULTS FOR 2022-2023 |                        |                      |   |
| QUARTER               | MEMBER GROWTH NET GOAL | MEMBER GROWTH ACTUAL | DROPPED MEMBERS ACTUAL<br>(including transfers) |
| JULY/AUG/SEPT         | 25                     | 28                   | 32  |
| OCT/NOV/DEC           | 25                     | 49                   | 39  |
| JAN/FEB/MAR           | 25                     | 31                   | 35  |
| APR/MAY/JUNE          | 25                     | 25                   | 7   |

**GOALS AND ACTUAL NEW CLUBS CUMULATIVE**



**GOALS AND ACTUAL MEMBERS CUMULATIVE**



**DROPPED CLUBS: 0**

**42 CLUBS OF 73 ADDED 1 OR MORE NEW MEMBERS**

**GENDER DISTRIBUTION**

|                      |              |
|----------------------|--------------|
| MALE                 | 961 (62.57%) |
| FEMALE               | 575 (37.43%) |
| NON BINARY           | 0 (0.00%)    |
| PREFER NOT TO ANSWER | 0 (0.00%)    |

**DROPPED MEMBERS**

[CLICK HERE FOR CUMULATIVE MEMBERSHIP DATA](#)

|                |            |
|----------------|------------|
| DECEASED       | 23         |
| CLUB CANCELLED | 0          |
| OTHER          | 89         |
| <b>TOTAL</b>   | <b>112</b> |

|                                 |     |
|---------------------------------|-----|
| TOTAL FAMILY UNIT MEMBERS       | 394 |
| FAMILY MEMBERS PAYING HALF DUES | 202 |